

WHAT'S NEW IN GEOVIA SURPAC 2020.1

THE WORLD'S MOST POPULAR GEOLOGY AND MINE PLANNING SOFTWARE

GEOVIA Surpac 2020.1 introduces a brand new licensing system as well as various improvements to its Roles capabilities, such as the introduction of LandXML files in GEOVIA Surveyor, sorting of SDM files by metadata in GEOVIA Mine Designer, improved point cloud classification and Lexicographic meshing in GEOVIA Mine Contributor and more.

LICENSING

Dassault Systèmes Licensing System (DSLS)

DSLS is a brand new licensing system now available for Surpac maintained users*. Some advantages to using the new system are as follows:

- No physical dongle or sentinel associated
- No downtime as a result of lost or damaged dongles
- Ability to take licenses offline
- Decrease risk of loss of network licenses through the use of Failover Server Clusters

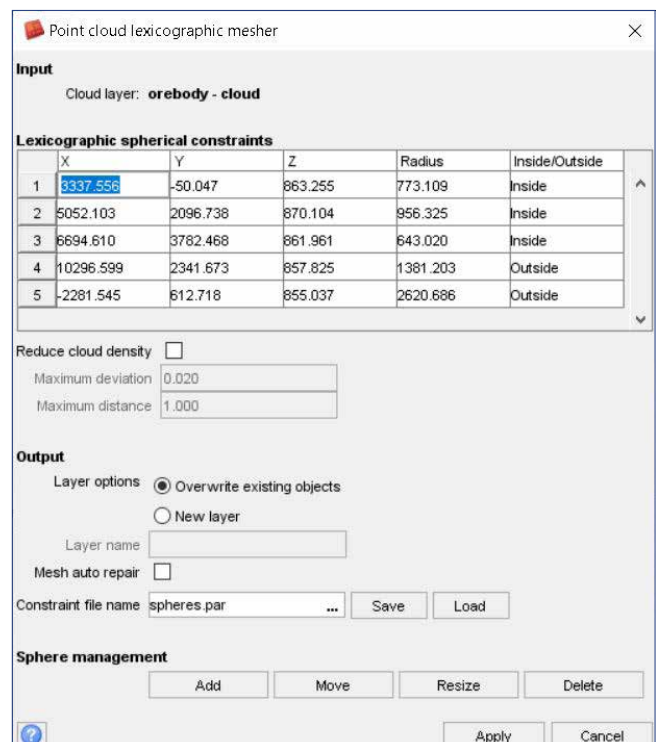
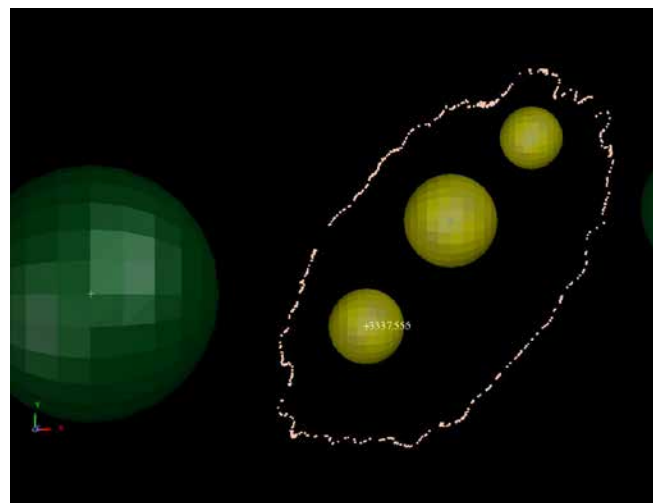
*DSLS is available with the newly released Roles in Surpac. Please contact your local GEOVIA representative for more information on how to access DSLS and migrate your existing licenses to the new Roles.

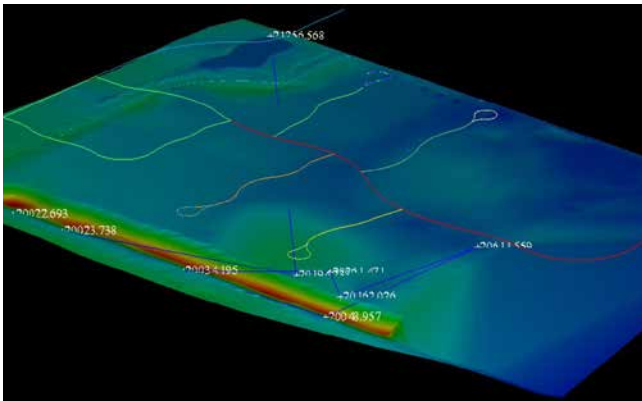
GEOVIA MINE CONTRIBUTOR ROLE

GEOVIA Mine Contributor brings improvements to Lexicographic mesh function and introduces the ability to classify point clouds.

Key features:

- New Cloud Classification function to update the classification type (typically from LAS/LAZ file) for a selected group of points, for a good understanding of data
- Time saving with point cloud filtering during point cloud meshing
- Better user experience in Lexicographic meshing with option to modify control spheres



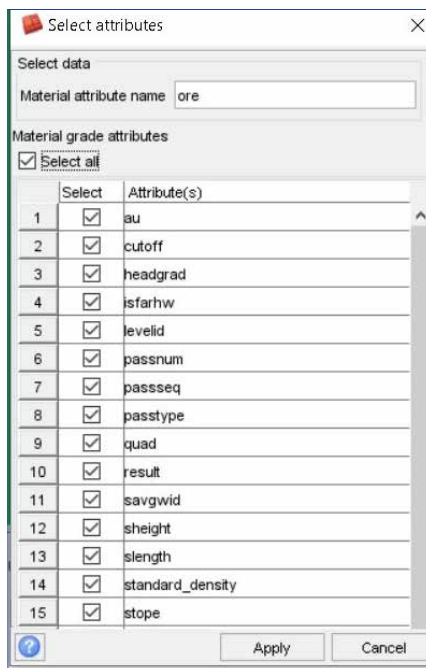


GEOVIA SURVEYOR ROLE

GEOVIA Surveyor can now work with LandXML files, the standard used by most Leica survey instruments.

Key features:

- Ability to drag and drop files from the Navigator into the Graphics window
- No need for file conversion, saving time
- Interoperability with Leica survey instruments

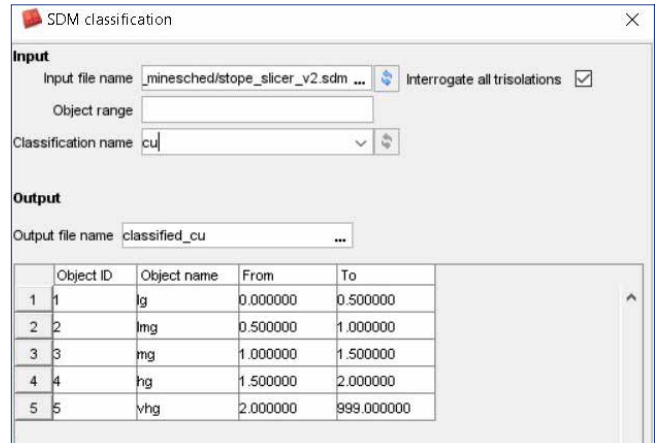


GEOVIA STOPE OPTIMIZER ROLE

GEOVIA Stope Optimizer has improved functionality and introduces the new Tube Gradient change section and the ability to convert SDM files into a MineSched compatible format.

Key features:

- Optimum stope shape generation
- Additional features to control stope shape generation
- End-to-end workflow
- Improved integration with MineSched through the use of metadata stored in SDM files



GEOVIA MINE DESIGNER ROLE

GEOVIA Mine Designer has improved performance for sorting of SDM based on metadata.

Key features:

- Ability to re-classify and re-analyse data using different criteria, for better and quicker data understanding
- Improved data management by sorting SDM file by metadata
- Complete SDM file functionalities

Our 3DEXPERIENCE® platform powers our brand applications, serving 11 industries, and provides a rich portfolio of industry solution experiences.

Dassault Systèmes, the 3DEXPERIENCE® Company, is a catalyst for human progress. We provide business and people with collaborative virtual environments to imagine sustainable innovations. By creating 'virtual experience twins' of the real world with our 3DEXPERIENCE platform and applications, our customers push the boundaries of innovation, learning and production. Dassault Systèmes' 20,000 employees are bringing value to more than 270,000 customers of all sizes, in all industries, in more than 140 countries. For more information, visit www.3ds.com.

